

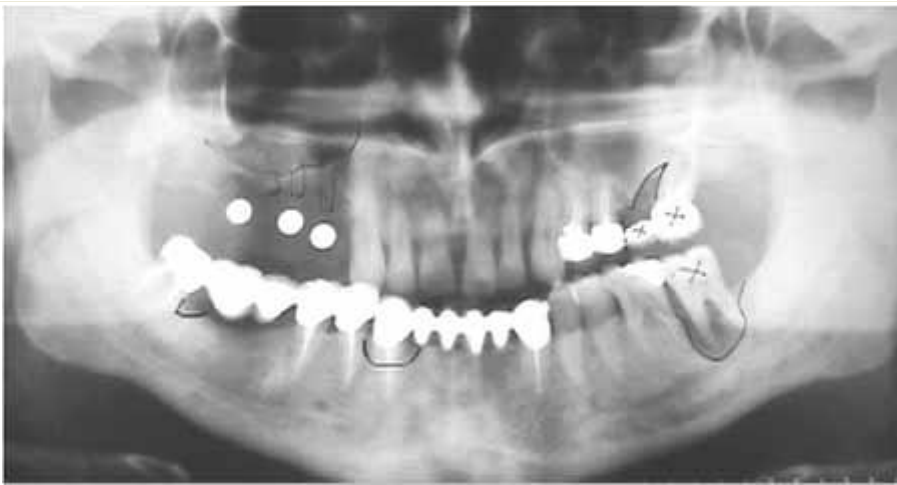


● Dr. Radu Baston ●

Patient no. 3

Right Maxillary Sinus Lift for Three Unit Cemented Bridge

Treatment planning



1. Removal of teeth 14, 15, 17, 27, 37.
2. Open-flap curettage 48 and 43 and closed-flap root planning in all other areas
3. Right maxillary sinus-lift (one stage)
4. Three-unit implant borne bridge

Lateral "mouse-trap" bone-lid incision



After implant placement and filling of the cavity with β -calcium triphosphate mixed with autogenous bone



The cavity has been covered with a resorbable collagen membrane (HYPROSORB-F)



Postoperative X-ray: the distal implant has been placed slanted on purpose to enable for easy screwdriver insertion



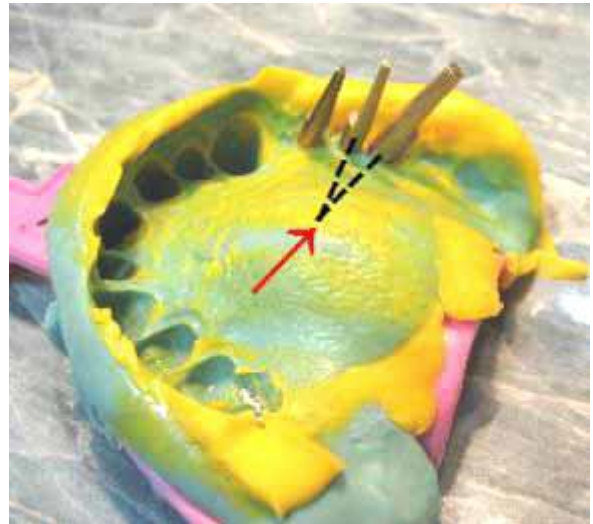
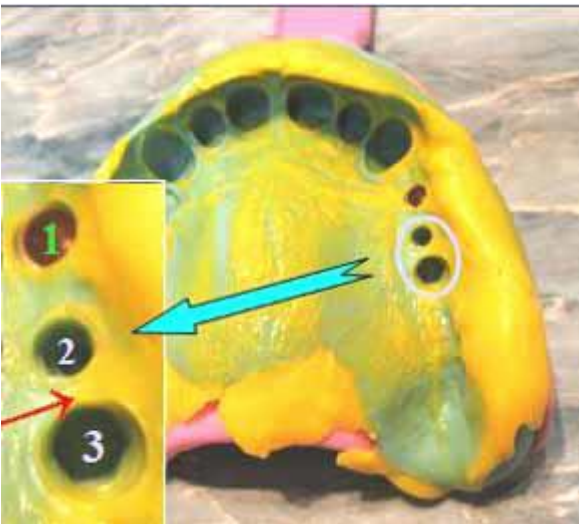


Healing cylinders



Inserted abutments as part of the closed-tray (pop-in) impression technique

Non Standard Pop-in Impression



The Master Cast



The distal straight abutment has been replaced by an angulated one

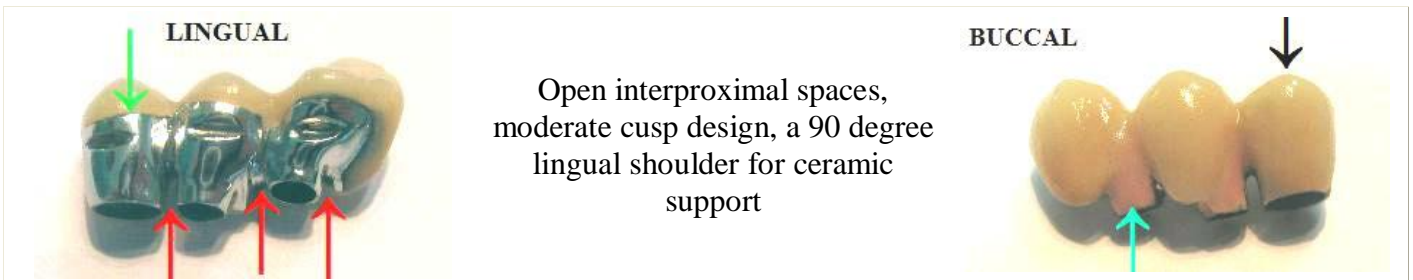
Burn-out Copings



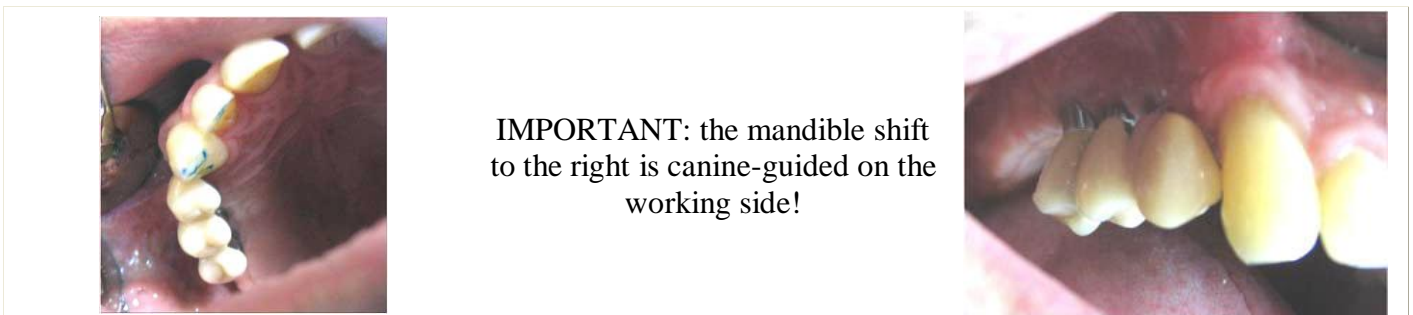
Metal frame Check-in



The Bridge Design features:



Bridge insertion and occlusal concept





One-year follow-up following coronoplasty 23



IMPORTANT: the mandible shift to the right is still canine-protected!

